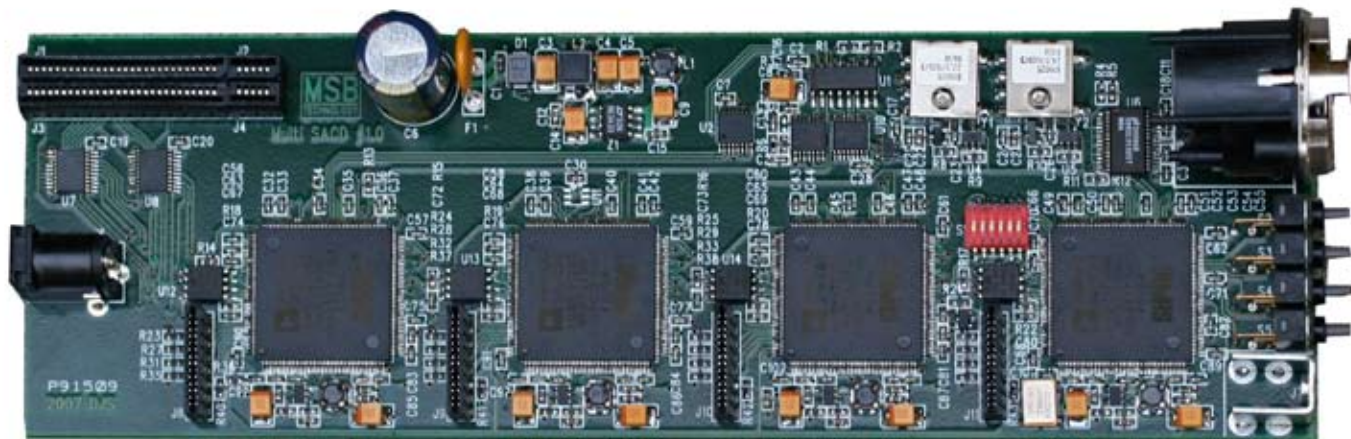


6 CH XPORT UPGRADE USERS MANUAL

REV 1 (4/08)



MULTI CHANNEL UNIVERSAL XPORT UPGRADE

OUTPUTS: 3 STEREO MSB NETWORK CHANNELS
CONNECTIONS: ATTACH TO ANY MSB DAC WITH NETWORK INPUT FOR 2 CHANNEL PLAYBACK. ATTACH TO 2 OR 3 MSB DACS OR A MULTICHANNEL MSB DAC FOR MULTICHANNEL PLAYBACK.

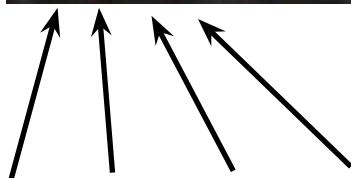
THIS UPGRADE IS INSTALLED IN THE DENON UNIVERSAL PLAYER. ALL DENON FUNCTIONS ARE UNCHANGED. THE QUALITY OF THE AUDIO AND VIDEO OF THE BASE UNIT ARE UNCHANGED. THE MSB NETWORK OUTPUT IS THE ONLY OUTPUT THAT REFLECTS THE UPGRADED PERFORMANCE.

THE TOGGLE SWITCHES REPLACE THE DENON DOWNMIXING FUNCTION FOR ALL SOURCES. THE DENON LARGE/SMALL AND DELAY SETTINGS STILL WORK FOR ALL SOURCES BUT SACD.

SONY MANDATES A 6 DB LEVEL CUT FOR SACD SO WE ALSO MAKE SUCH A LEVEL CUT ON CD PLAYBACK. ALL OTHER SOURCES ARE OUTPUT AT FULL LEVEL. THE MSB POWER DAC AND DAC3 NOW HAVE A 6 DB LEVEL CUT ADDED TO THE FILTER TOGGLE SO EASY A/B COMPARISONS CAN BE ACCOMMODATED. BECAUSE OF THIS LEVEL SHIFT ON CD PLAYBACK DO NOT USE THE MSB NETWORK FOR DAC FIRMWARE UPDATES. USE THE COAX OR OPTICAL SP/DIFF OUTPUT ONLY.



*MSB
Network
Output*



MSB TECHNOLOGY CORPORATION xPORT MULTI UPGRADE			
TOGGLE SWITCH SETTINGS			
MODE	CENTER	SUB	REARS
MULTI D.MIX	ON	ON	ON
-	-	-	-
2-CH ONLY	OFF	OFF	OFF



*Green Lit = Output
Off
Red Lit = Downmix*

2 Channel Playback

Toggle 1 sets which track of a SACD is played back, the 2 channel track or the 6 channel track. For optimum 2 channel playback, select 6 track playback and turn off (downmix) the other channels. Some material may sound better with the rears "ON" so they are not included in the downmix.

